

Sustainable Management Support Service

Building strategies and systems that enable Japanese companies to survive and thrive

Amid dizzying changes in the socioeconomic environment, previously unimaginable events are taking place in rapid succession.

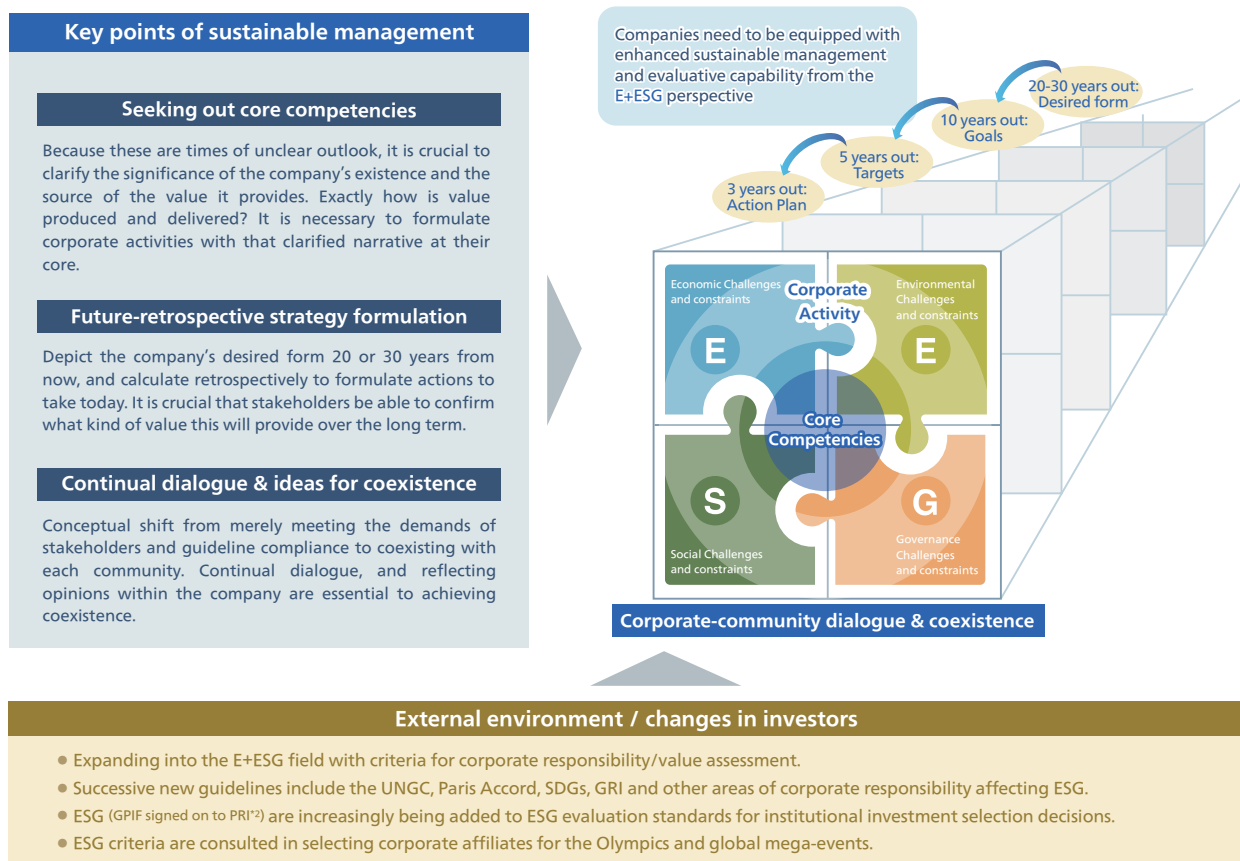
As this happens, new guidelines are being formulated in rapid succession, aimed at benefitting the entire world 20 or 30 years down the road. New rules are thus being put in place with which companies must comply.

Those that respond promptly to these changes can see in the formulation of these new rules the seeds of innovation and stronger competitiveness. In doing so, they are discovering new business opportunities and enriching their risk management. While responding to numerous diverse variables, ABeam Consulting provides uniform services ranging from strategy formulation to implementation, seeking out sources of corporate value to strengthen competitiveness.

What is sustainable management?

In order to survive and thrive amid drastic socioeconomic change, a company must continuously generate value through innovation. Sustainable management is the concept that makes this achievement possible. It means enabling a company to pursue its own core competency, continually taking a long-term view and understanding of the firm's significance while boosting competitiveness, increasing corporate value and providing greater value.

This view is definitely nothing new to Japanese industry. In recent years, however, the UNGC, Paris Accord, SDGs and GRI*1 have been among numerous guidelines that have come out demanding corporate social responsibility. These have been added to the criteria by which institutional investors evaluate corporate value and select investments. Japanese companies face the urgent need to practice sustainable management to achieve the transparency that enables stakeholders the world over to understand them.

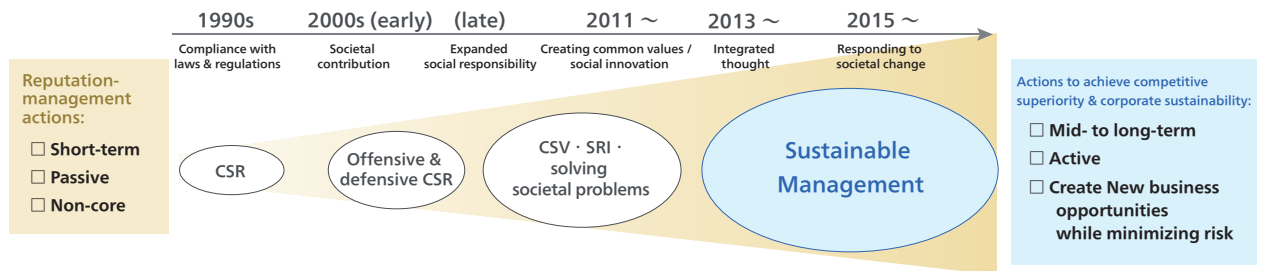


*1 Guidelines related to corporate social responsibility include the United Nations Global Compact (UNGC), Sustainable Development Goals (SDGs) and Global Reporting Initiative (GRI).

*2 Government Pension Investment Fund (GPIF) and Principles for Responsible Investment (PRI): by signing onto PRI, GPIF, among the world's major capital funds, emphasizes the importance of ESG investment. Its dissemination in Japan is accelerating.

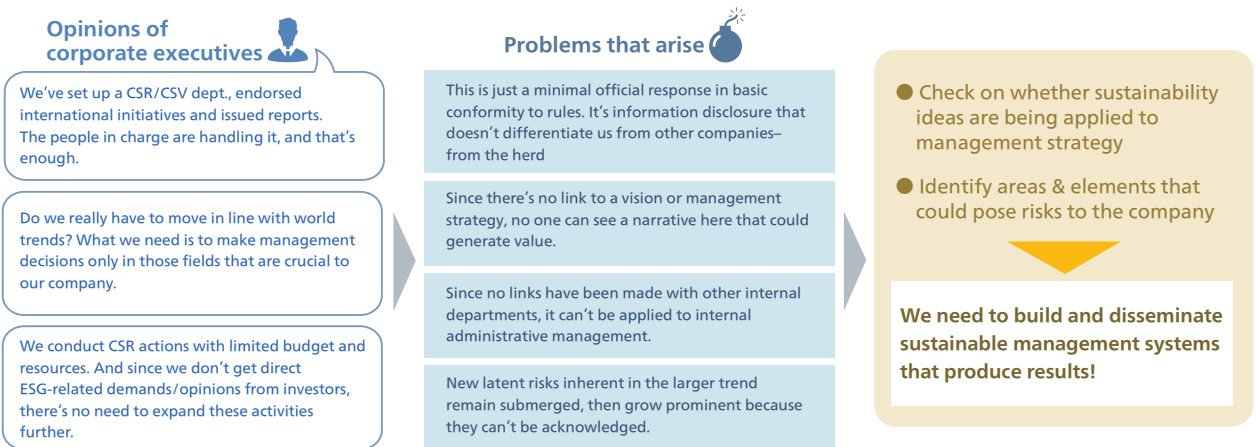
Distinguishing sustainable management from CSR

Since the 1990s, the domains of CSR and sustainability have undergone major changes. There are generally major differences between CSR and sustainable management in terms of scope of relevant activities, corporate responsibilities and modes of action.



Impression that sustainable management has been achieved

Many Japanese companies have achieved long-term sustainability in their business operations by continually giving due consideration to employees, local regions, society and associates. It is also a fact, however, that they have responded passively to the requirements of stakeholders and global initiatives. The result is that a number of unresolved issues remain with Japanese firms despite their belief that they have achieved sustainable management.



Sustainable management support lineup

The sustainable management support offered by ABeam Consulting fully realizes the management infrastructure and performance cultivated by Japanese companies up to now, while building on a foundation that integrates the concept of sustainability with business management.

Rather than merely consulting case studies of advanced companies and promoting compliance with global guidelines, we support progress through decision-making that takes an economically rational approach to determining what actions will succeed in sustainably providing value in the manner that characterizes Japanese corporations.

ABeam Consulting addresses a broad scope of areas ranging from strategy to systems infrastructure, providing support using state-of-the-art information technology. The following three distinctive characteristics set us apart:

1. Effective operational systems construction through implementation support
2. Proposals of the most appropriate measures in response to corporate circumstances, issues and goals
3. Achieving dynamic change that makes the most of organizational, personnel and operational transformation

		Economic	Environment	Social	Governance		
Strategy	Strategy formulation support	Sustainable management strategy formulation (desired corporate form, integration of corporate strategy with socioeconomic changes)					
	Marketing solutions	Corporate branding strategy formulation (strategy formulation linking sustainable management to enhanced corporate brand value)					
Organizational & Personnel	Internal	Change management	HR development	Support for company-internal awareness transformation, and for enlightenment & educational activities			
		Knowledge management		Support for sustainability-related knowledge management and for cultivating a generation of managers			
	External	Engagement with govt. admin.	Stakeholder engagement implementation support				
SCM		Support for supplier enlightenment & education					
Business process	Companywide transformation promotion	Energy / carbon risk response support		Support for promoting diversity & inclusion			
	KPI definition	Disclosure automation support		Human rights due diligence support	Workstyle transformation implementation support	Support for building up integrated risk management	Support for policies to prevent illicit actions
	Process design & construction	Environment Management System implementation support (energy consumption & cost analysis)		Diagnosis of existing sustainability-related activities			
	Financial info. disclosure					Assessment to identify materiality	
Systems	Enterprises core systems adoption	Informational and analytical system					